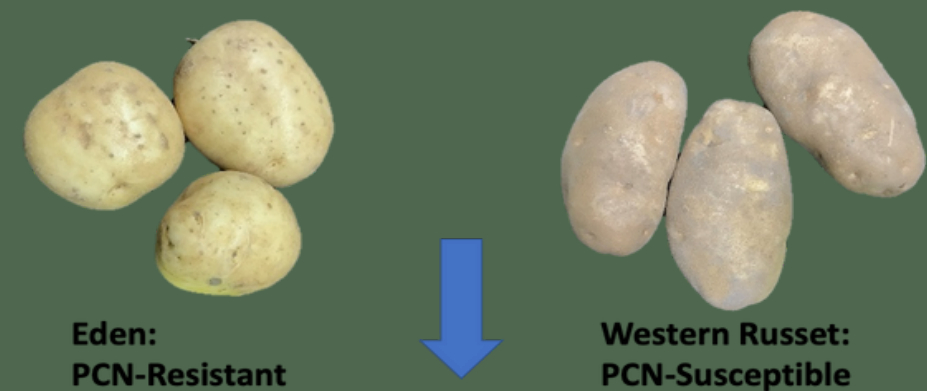


# Selecting Varieties with Nematode Resistance

- Crosses made by breeders incorporate resistance genes into new varieties
- New varieties are selected based on phenotype
- Acceptable phenotypes are entered into trials to further evaluate yield, quality, storage, and processing/fresh pack suitability
- Varieties that graduate successfully from trials may be named and released to the potato industry, a process that takes 12-15 years

Initial crosses



Single hill selections



Agronomic Trials



FOR MORE INFORMATION, PLEASE VISIT [POTATONEMATODES.COM](http://POTATONEMATODES.COM)

Supported by the USDA National Institute of Food and Agriculture award number 2022-51181-38450